

CATERDRA DE GEOCIENCIAS COSTERAS Y DE LA PLATAFORMA CONTINENTAL

CURE - ROCHA

Creada en 2017



Dr. Felipe García-Rodríguez

Departamento de Geociencias
Centro Universitario Regional del Este
Rocha -- URUGUAY

felipegr@fcien.edu.uy

Cel: 099782897

Development objective (long term) – contribution to overall development goals taking into consideration social, economic and cultural development

To foster advanced teaching and research activities to increase the availability of scientific information about coastal and continental shelf Geoscience, thus contributing to the sustainable management and use of natural resources.

Specific objectives- not exceeding 4 (short term) – short-term needs to be satisfied by the proposal

- M.Sc. and Ph. D. degrees in the field of coastal and continental shelf geoscience.
- To cooperate with all interested in generating scientific inputs for decision making and organizing outreach activities.
- To encourage and facilitate the active participation of the teaching and research staff
-
- To support the activities undertaken by the UNESCO International Programme for Geoscience and Geoparks and the Intergovernmental Oceanographic Commission (IOC)

Subjects

Geology , Sedimentology, Geophysics, Seismic profiles, Micropaleontology, Paleooceanography, Paleolimnology, Paleoclimatology, Archaeology, Hydrogeology and Hydrology, Oceanography, Limnology, Estuarine Environments, Human Impact Assessment by Paleoenvironmental Techniques, Water Quality, Environmental Management

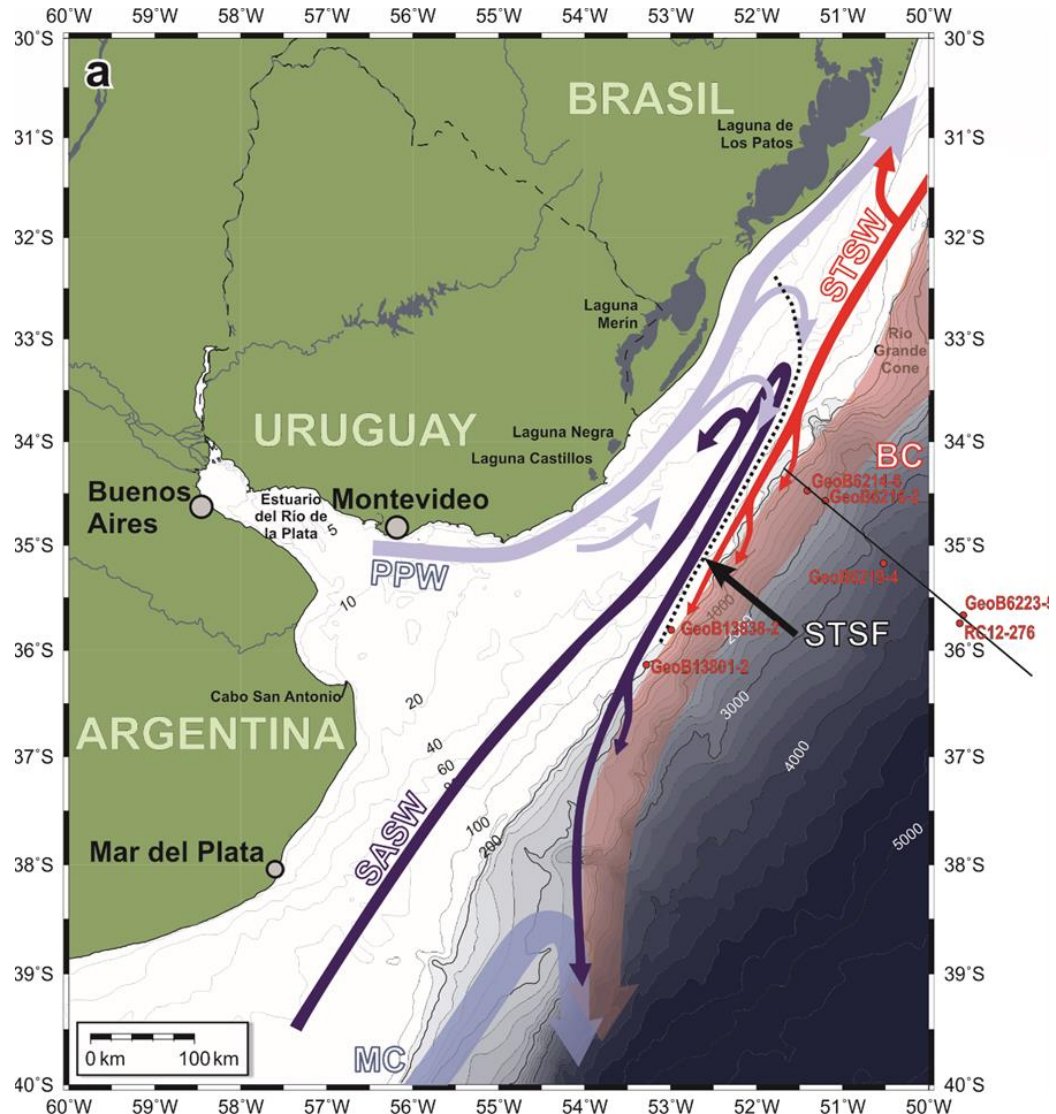
PEDECIBA GEOCIENCIAS
UDELAR
CSIC
DAAD
ANII

El sistema limnológico-oceanográfico

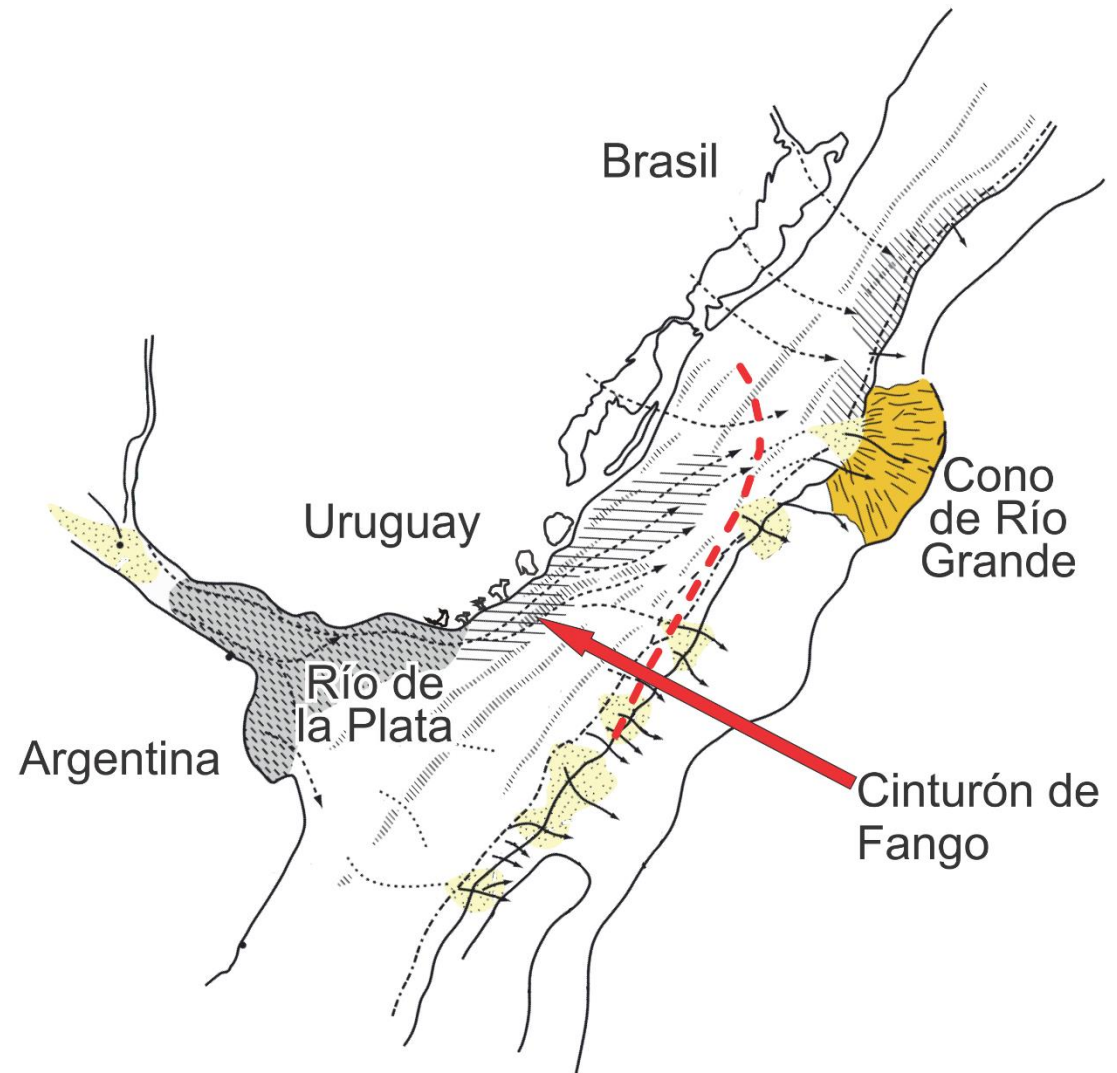
Río de la Plata y OASO

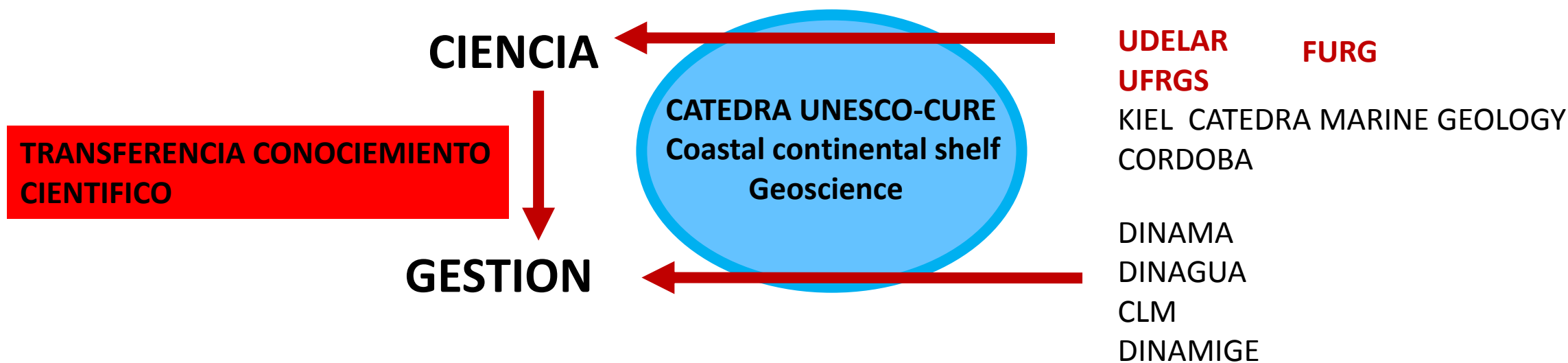
Sistema Patos-Merín

Cordon de Lagunas



El sistema sedimentario





CIENCIA

**TRANSFERENCIA CONOCIMIENTO
CIENTIFICO**

GESTION

**CATEDRA UNESCO-CURE
Coastal continental shelf
Geoscience**

**UDELAR
UFRGS**

FURG

**KIEL CATEDRA MARINE GEOLOGY
CORDOBA**

**DINAMA
DINAGUA
CLM
DINAMIGE**

Paleolimnología en la Antártida

